

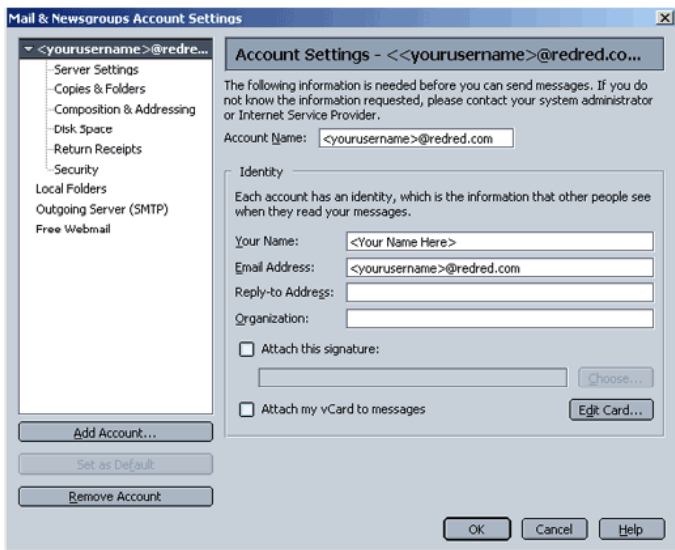
## How to Setup SMTP Authentication in Netscape

Open Netscape Mail & Newsgroups

Click on Edit at the top of the window.

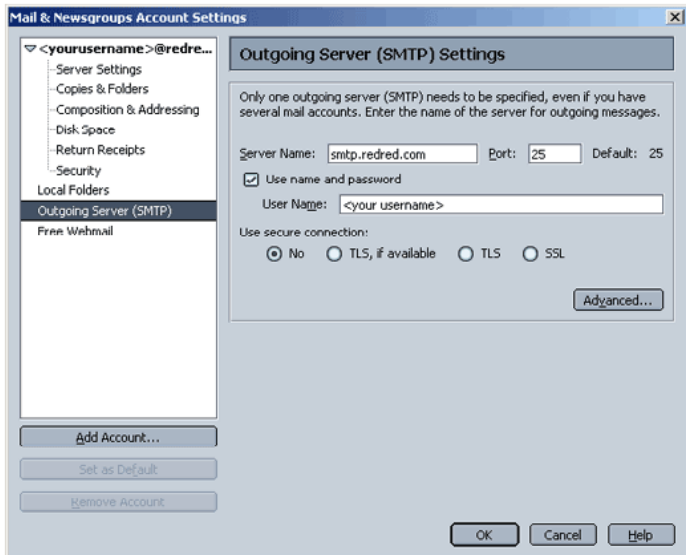
Click on Mail & Newsgroup Accounts Settings from the drop down window.

A window similar to the one below should open.



Next, highlight **Outgoing Server** at the bottom of the list on the left-hand side.

There will be a window similar to the following;



Check the box labeled "Use name and password".

Make sure the that your username is in the User Name field.

Click OK to close this window.

Done!